

# CP-DBP-H20 Body Worn Camera

User manual



VER 3.0

Introduction

Sincerely thanks all the user pick out and buy our company's law enforcement recorder, please read this manual carefully before you use it. moreover, please keep this manual properly. In order to query when needed.

The right to interpret the relevant content of this manual is owned by our company, if there is no further notice of change.

This manual is the product use manual, the functional characteristics of the product are briefly introduced/performance index/Appearance structure/Use operation and matters need attention. For the majority of users in the use of reference, please read in detail before use.

If equipment failure or have questions about this manual, please contact our company in time. Also welcome suggestions and criticisms.

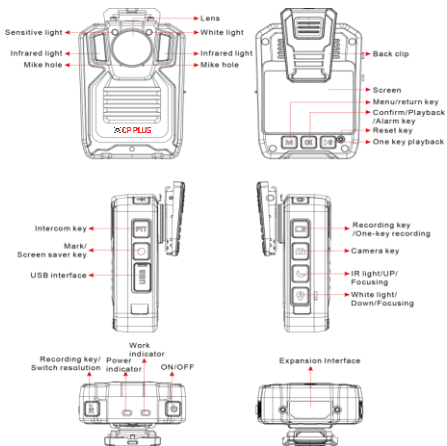
**Warning:**

1. Please keep away from the fire source;
2. Avoid the LCD screen and camera lens placed directly under the sun exposure.

**Pay attention to:**

1. Specific frequency of electromagnetic waves maybe affect the image quality;
2. Before you start working with this product, Please make an experimental video so that you can master the use of it;
3. Products for a long time without use, when used again, please charge in advance;
4. When the machine is in trouble, please do not disassemble and repair, the machine can only be authorized by the maintenance personnel to carry out maintenance;
5. After the switch machine, when the color of the machine screen have chromatic aberration(rubbed), please re open the power button, that will return to normal color.

## -1- Machine key description



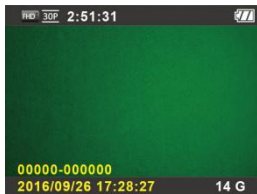
## -2- Quick start guide

### Turn on/off

Short press the power button to boot, the machine come into the standby state, long press 3 seconds to turn off in any state.

### Switch the screen

Boot in any state, on / off screen saver function through short press the power button.



### Recording

Standby mode, short press the recording button, a "Ding" sound with the motor vibration sound, and the yellow light is bright, the screen shows a flashing red dot and shows the recording time, recording is normal, press again to stop the Recording and saving file.

Switch resolution

In standby mode, long press the recording key to switch the recording resolution FHD (1920x1080 30P) and HD (1280x720 30P)

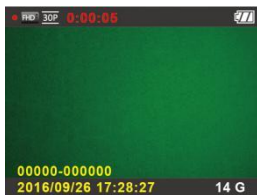


### Video

In standby mode, short press the video button, a "Ding" sound with the motor vibration sound, and the red light is bright for a long time, the screen shows a red flashing dot and the recording time, then it is normal, press again to stop and save the file.

### One-key recording

Short press the video button to boot video when machine is shut down, the screen shows a red flashing dot and the recording time, it is normal.



### Take pictures

Standby mode, short press the camera button, there is a "click" sound and the red light will be bright, take a photo and the screen will switch to the camera interface, you can switch the focus in the camera interface, long press up / Down key to adjust 0-16x focal length.

### Capture

Video status, short press the camera button, you can capture the photo at that time.



### Infrared light

In standby mode, short press to turn on / off the infrared light, the image display from color to black and white.

### Up

Short press to reach the up-flip function in the menu setting or file selection state.

### Adjust the focal length

After taking a picture into the focus state, long press to adjust the focal length in the 1-16 times.

### **Rewind playback**

In the video playback, short press to 2x, 4x, 8x speed up the playback, press the “OK” to pause / resume.

### **White light**

In standby mode, short press the white light button to turn on / off the white light, which can be used as lights and fill-light.

### **Down**

In menu setting or file selection state, It has a down flip function to short press.

### **Adjust the focal length**

It comes into the focus state after taking a picture, long press to adjust in the range of 1-16 times.

### **Fast forward play**

In the playback of the video, short press to achieve 2x, 4x, 8x speed fast forward playback, press the “OK” to pause / resume playback.

### **Talkback button**

Through the walkie-talkie cable to connect the walkie-talkie to achieve shoulder microphone function (walkie-talkie cable is optional accessory).

### **Key mark**

In video / recording state, the lower right corner of the machine has a yellow five-pointed

star display after the long press, then record the file and it will be marked as a key document. the file name has caudal vertebrae-IMP words when you check on the computer.

### Menu

In the standby mode, press the menu button to enter the system setting interface, it shows as a vertical selection, press the “up” and “down” to select the option will be modified, press the “OK” to enter the parameter options, press the “Up, Down” button to select, press “OK to confirm , Press “Return” button to the previous interface.

### Return button

Menu settings or file selection state, short press to return to the previous interface.

### Confirm

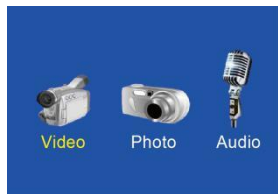
In the menu setting or file selection state, short press “OK” has the confirmation function.

### Alarm

In any case, long press to open the alarm function, alarm and white flash followed.

### Local playback

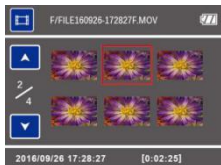
In standby mode, press the “Return” to enter the local playback interface.



### Video playback

In the playback interface, select the video and open, press the Up / Down keys to select the video file you want to play, press “OK” to play, and then press again to pause / resume.

The video file format is .MOV.



### Picture playback

Select the picture and open in the playback interface, , press the up / down button to select the picture file you want to view, press the “OK” to open it, the picture file format. JPG.



### Recording playback

In the playback interface, select the recording and open it, press the up / down button to select which you want to play, press the “OK” to play, press again to pause. The audio file format is .WAV.



### **One-key to play back**

In standby mode, short press one-key to play back the last recorded file after recording the file.

### **Reset function**

When the machine crashes or failed, press the reset button to reset the machine.

### **Data output / charge interface**

Connect to the computer through the data cable, you can output video files or charging with the charger.

## **-3- Menu parameter settings**

Set the initial setting, you need to change the initial setting firstly. In the standby mode, press the "Menu" button to enter the system setting interface, press "Up / Down" to select the option to be modified, press "OK" to enter the parameter Select, and then press the "OK" button to confirm, press the "return" key to return to the previous level.

### **Movie Mode**

The resolution has 3 options, "1920\*1080 30p, 1280\*720 30p, 640\*480 30p", which means the size of the video recording. The default resolution is "1920\*1080 30p".

## System Setting

Movie Mode	1920*1080 30p
Movie Quality	High
Photo Size	14M
Photo Quality	High
Photo Rate	Off

**Movie Quality**

Video quality is "high, middle, low" three options.

## System Setting

Movie Mode	1920*1080 30p
Movie Quality	High
Photo Size	14M
Photo Quality	High
Photo Rate	Off

**Photo Size**

The photo size has five options for "30m, 14m, 12M, 8m, 5m", representing the pixels from the 5 million -3000, the photo size refers to the photo taken by the pixel, the default photo size is "14m".

## System Setting

Movie Mode	1920*1080 30p
Movie Quality	High
Photo Size	14M
Photo Quality	High
Photo Rate	Off

**Photo Quality**

Photo quality has three options: "high ,middle, low", The default photo quality is "high".

System Setting	
Movie Mode	1920*1080 30p
Movie Quality	High
Photo Size	14M
Photo Quality	High
Photo Rate	Off

### Photo Rate

Triple shot switch has "off on" two options. Open the triple shot switch, press the camera button for shooting three photos. The default triple shot switch is "off".

System Setting	
Movie Mode	1920*1080 30p
Movie Quality	High
Photo Size	14M
Photo Quality	High
Photo Rate	Off

### Light Change

Screen brightness has "high, middle, low" three options. Screen brightness refers to LCD screen's high and dark. The default screen brightness is middle.

System Setting	
Light Change	Mid
Volume	Mid
Sound Record	On
Movie Clip	15min
Delay Record	Off

### Volume

The volume has four options: "high, medium, low, and close". Volume refers to the switch

machine prompt tone and key tone. Default volume is "high".

System Setting	
Light Change	Mid
Volume	Mid
Sound Record	On
Movie Clip	15min
Delay Record	Off

### Sound Record

Sound recording has two options: "on and off", on / off sound recording. The default sound record is "open".

System Setting	
Light Change	Mid
Volume	Mid
Sound Record	On
Movie Clip	15min
Delay Record	Off

### Movie Clip

Movie clip has four options: "5 minutes, 10 minutes, 15 minutes, and 30 minutes". After setting, the video recording for a few minutes is automatically saved as a file, the default video segment is "15 minutes".

System Setting	
Light Change	Mid
Volume	Mid
Sound Record	On
Movie Clip	15min
Delay Record	Off

### Delay Record

The delay record has "off, 10 seconds, 20 seconds, 30 seconds, 1 minutes, 5 minutes " six options, after the delay record is set, the number of seconds after shooting the video button can also be recorded in the video. The default delay record is "off".

System Setting	
Light Change	Mid
Volume	Mid
Sound Record	On
Movie Clip	15min
Delay Record	Off

### Infrared Switch

Infrared has "manual, auto" 2 options. When set automatic, automatic sensing external light and shade degree, and switch to infrared mode automatically, the infrared light on, image turn into black and white color. Set manual infrared mode, long press infrared lamp key to start. The default infrared is manual.

System Setting	
Infrared Switch	Manual
LCD Power Save	3min
Power Off	10min
Car Mode	Off
Loop Video	Off

### LCD Power Save

LCD power save has "off, 30 seconds, 1 minutes, 3 minutes, 5 minutes," the five options. Automatic off screen means that the machine does not automatically turn off the screen after any operation into the sleep state. Automatic off screen for 3 minutes".

System Setting	
Infrared Switch	Manual
LCD Power Save	3min
Power Off	10min
Car Mode	Off
Loop Video	Off

### Power Off

Automatic shutdown has "never, 30 seconds, 1 minutes, 3 minutes, 5 minutes, 10 minutes." six options, Automatic shutdown means that the machine is turned on automatically without any operation. The default auto shut off is never.

System Setting	
Infrared Switch	Manual
LCD Power Save	3min
Power Off	10min
Car Mode	Off
Loop Video	Off

### Car Mode

Car mode has "on, off" two options. Open the car mode, the machine is connected to the car for charging, the machine automatically starts on and starts video recording, after stop charging for 10 seconds will off machine automatically. The default car mode is off.

System Setting	
Infrared Switch	Manual
LCD Power Save	3min
Power Off	10min
Car Mode	Off
Loop Video	Off

## Loop Video

There are two options for loop video is "open and close". In the process of video recording, the memory is full, cannot save the recording, open loop video setting, at this point the system will automatically delete the previous video, continue recording. The default loop video is "off".

System Setting	
Infrared Switch	Manual
LCD Power Save	3min
Power Off	10min
Car Mode	Off
Loop Video	Off

## Voice speech

Voice speech has "ON, Off" two options. After opening the record warning, the machine broadcasts the police number when it is powered on and broadcasts the whole point at the whole point. The default record warning is "Off".

System Setting	
Voice speech	Off
ToggleGPS	Off
Default Setting	
Clock Setting	
Change PWD	

## Default Setting

There are two options for default settings is "yes" or "no", when you select Yes, The system will restore the system parameters.

System Setting	
Voicespeech	Off
ToggleGPS	Off
Default Setting	
Clock Setting	
Change PWD	

### Clock Setting

When you select the clock settings option. Press confirm key to enter clock setting interface, press up/down key to adjust number size, press confirm key to confirm setting.

System Setting	
Voicespeech	Off
ToggleGPS	Off
Default Setting	
Clock Setting	
Change PWD	

### Change PWD

Select the "change password" option, press confirm key to enter change password interface, The interface has the old password and the new password, default password is 000000.press up or down key to, respectively, Press "up and down" key to enter the old password, and then modify the new password, press the "confirm" key to confirm the settings.

System Setting	
Voicespeech	Off
ToggleGPS	Off
Default Setting	
Clock Setting	
Change PWD	

### PID Setting

Select "PID" option, press "confirm" key to enter the PID setup interface, the default is "00000-000000", the first front 5 digits represent the number of devices, behind the 6 digit represents the user number. According to the "up down" key can be modified. Press OK to confirm settings.

System Setting	
PID Setting	
FW Version	36A-2017.09.13
Language	English

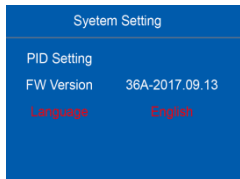
### FW Version

The FW version is the software version number that is embedded in the factory.

System Setting	
PID Setting	
FW Version	36A-2017.09.13
Language	English

### Language

The language has two options: "Chinese, English". The default language is "English".



## -4- Data transmission (no drive device)

1. connecting the machine and compute through the use of USB data cable in the machine shutdown state, the machine boot into the password input status, enter the set password, press "OK" to enter the U disk.



2. open "my computer" , come into the U disk, there will be: DATA, FILE 2 folders, DATA folder equipped with GPS generated files, FILE folder has recording files, photos, video and external camera recording files.



3. unplug the USB after data transmission, the machine will automatically shut down.

### Machine formatting method:

After the machine is connected to the computer, open "My Computer", right click on the "removable disk", select "format (A) ..." "FAT32" format for memory 16GB / 32GB , "exFAT" format for 64GB / 128GB.

## -6- Common troubleshooting and Solutions

Fault phenomenon	fault diagnosis	failure recovery
The Host cannot boot	running down of battery	Full charge 4 hours
	Host protection	Click [reset] button to restart
	Host protection	Using a USB communication cable to connect the recorder with the compute several times hot-unplug recorder End Interface, Activate the device and reboot.
Short working hours	undercharge	Charge more than 4 hours
Copy data to the computer Interrupted Midway	Computer Front panel USB interface Insufficient supply	Recommended data cable connected to the computer after the panel USB interface

Computer identification recorder	Data line problem	Replace data line
----------------------------------	-------------------	-------------------

**Thank You for Choosing CPPLUS**